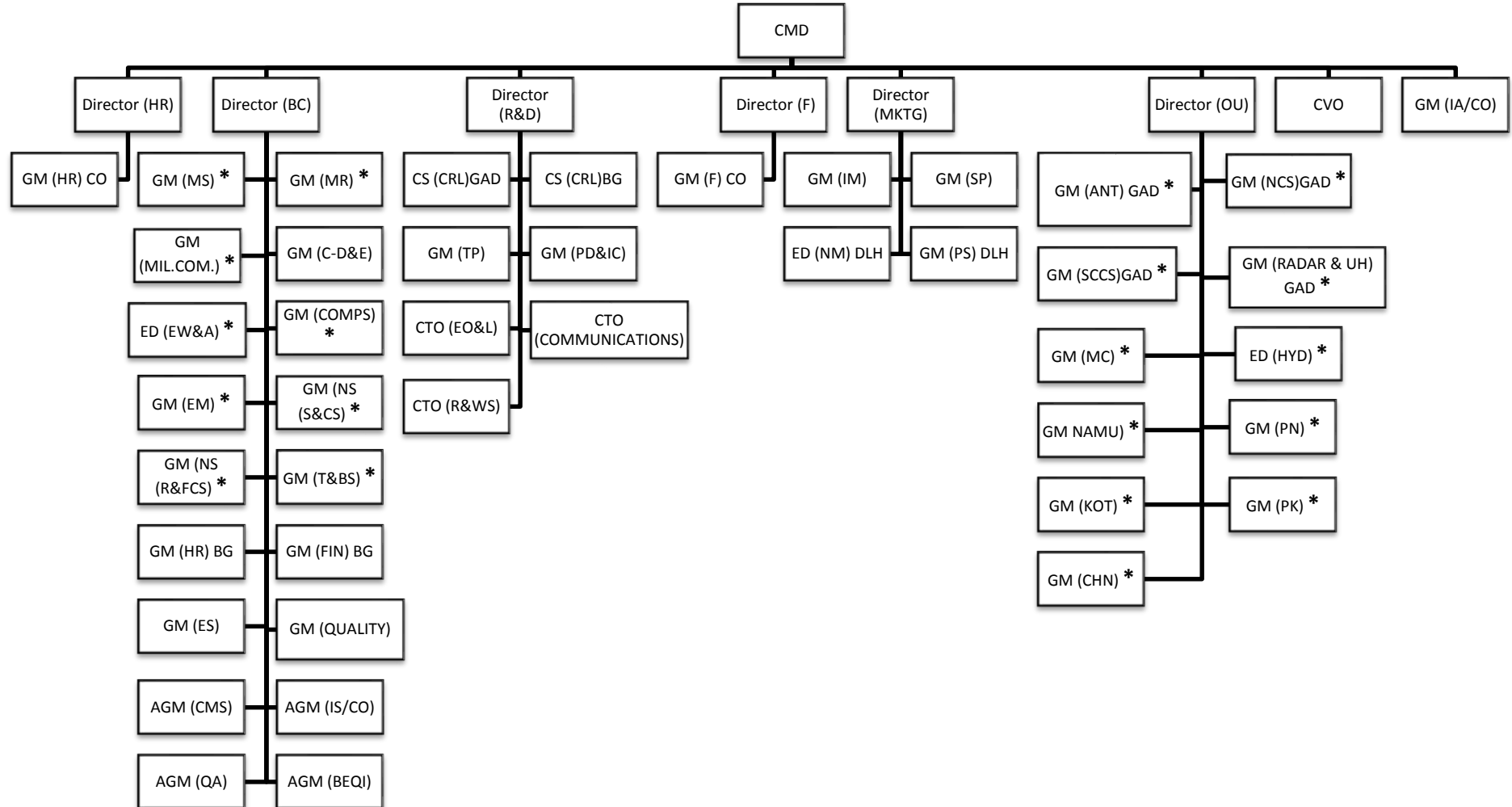


# ORGANISATION CHART OF BEL as on 01.01.2017



\* - Unit / SBU Heads report administratively to D (OU) / D(BC) and functionally to D (MKTG) , D (R&D) and D(HR) for respective functions.

CTO	:	CHIEF TECHNOLOGY OFFICER	EO&L	:	ELECTRO OPTICS & LASER
R&WS	:	RADAR & WEAPON SYSTEMS	BC	:	BANGALORE COMPLEX
HR	:	HUMAN RESOURCES	F	:	FINANCE
R&D	:	RESEARCH & DEVELOPMENT	OU	:	OTHER UNITS
MKTG	:	MARKETING	MR	:	MILITARY RADAR
C-D&E	:	CENTRAL – DEVELOPMENT & ENGINEERING	MIL.COM.	:	MILITARY COMMUNICATION
MS	:	MISSILE SYSTEMS	COMPS	:	COMPONENTS
EW&A	:	ELECTRONIC WARFARE & AVIONICS	ES	:	ENGINEERING SERVICES
EM	:	EXPORT MANUFACTURING	NS (S&CS)	:	NAVAL SYSTEMS (SONAR & COMMUNICATION SYSTEM)
NS (R&FCS)	:	NAVAL SYSTEMS (RADAR & FIRE CONTROL SYSTEM)	T&BS	:	TELECOM & BROADCASTING SYSTEM
CMS	:	CENTRAL MANUFACTURING SERVICE	QA	:	QUALITY ASSURANCE
IS	:	INFORMATION SYSTEMS	CRL/GAD	:	CENTRAL RESEARCH LABORATORY / GHAZIABAD
BEQI	:	BHARAT ELECTRONICS QUALITY INSTITUTE	TP	:	TECHNOLOGY PLANNING
CRL/BG	:	CENTRAL RESEARCH LABORATORY / BANGALORE	IA/CO	:	INTERNAL AUDIT / CORPORATE OFFICE
PD&IC	:	PRODUCT DEVELOPMENT & INNOVATIVE CENTER	SP	:	STRATEGIC PLANNING
IM	:	INTERNATIONAL MARKETING	PS/DLH	:	PRODUCT SUPPORT / DELHI
NM/DLH	:	NATIONAL MARKETING / DELHI	NCS/GAD	:	NETWORK CENTRIC SYSTEM / GHAZIABAD
MC	:	MACHILIPATNAM	SCCS/GAD	:	SATCOM & CELLULAR COMMUNICATION SYSTEM/ GHAZIABAD
NAMU	:	NAVI MUMBAI	ANT & UH/GAD	:	ANTENNA & UNIT HEAD / GHAZIABAD
KOT	:	KOTDWARA	HYD	:	HYDERABAD
CHN	:	CHENNAI	PN	:	PUNE
PK	:	PANCHKULA			